

INSTRUCTIONS

KWELE BULKHEAD

4532.3030 4532.3031 4532.4030 4532.4031

Please read the instructions before commencing installation and retain for future reference.



SPECIFICATIONS

- **Fitting:** Body made in ABS & PC with PC diffuser.
- **Lamp types:** 13W/ LED 3000 or 4000K
- **Protection against electric shock:** CLASS II. Does not require earth connection.
- **Ingress Protection:** IP65. Complete protection against dust and against the effects of water jets.
- **Driver:** Includes LED driver
- **Quality/Corrosive rating:** Suitable for commercial use and indoor/outdoor applications
- **Ambient temperature range:** -20°C to +55°C.

INSTALLATION INSTRUCTIONS:



Electrical products can cause death, injury, and damage to property. Installation of this product must be carried out by a qualified electrician, in accordance with SANS 10142. On completion of installation, ensure that the Certificate of Compliance is updated.



CAUTION: Risk of electric shock

PLEASE NOTE: The light source contained on this luminaire shall only be replaced by the manufacturer or the service agent or a similar

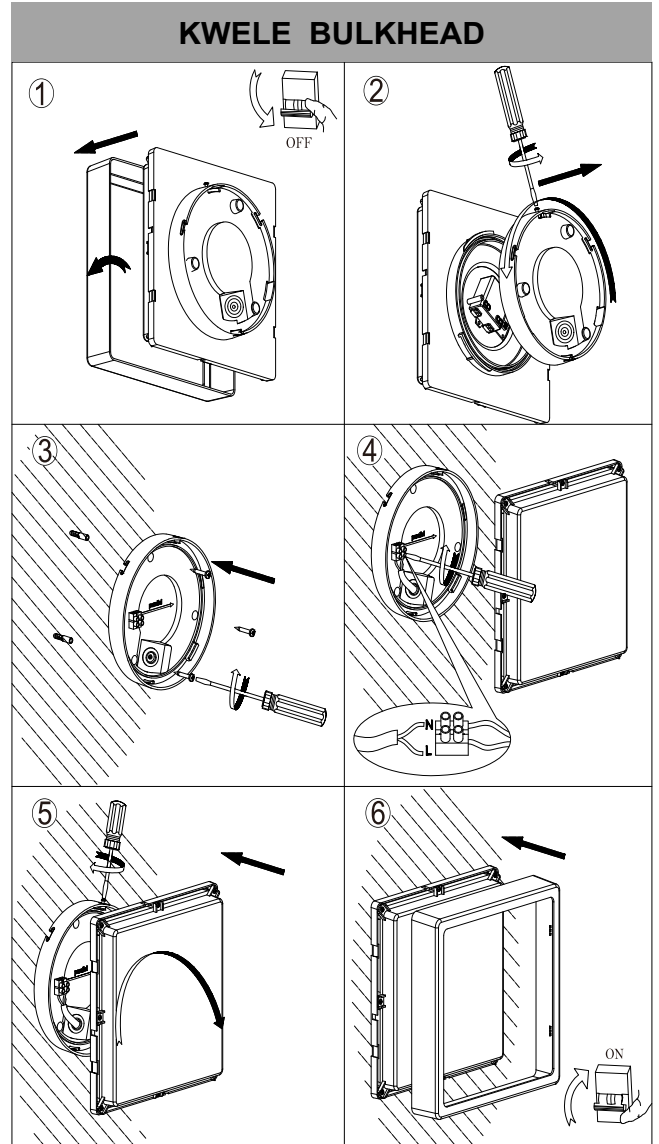
qualified person.

Ensure main supply is switched off.

- Remove the cover frame from the body and diffuser. (Fig. 1)
- Unscrew and remove the base from the body. (Fig. 2).
- Feed the main supply cable through the grommet and attach the base to the wall with the screws provided. (Fig. 3)
- Connect the main cable to the terminal block: (Fig. 4)
Live: Brown → Brown or Red
Neutral: Blue → Blue or Black
- Re-attach the body to the base by rotating it and tighten the locking screws. (Fig. 5)
- Re-attach the cover frame by clipping it on. (Fig. 6)

Turn on mains supply.

PLEASE NOTE: Ensure all items and screws are secure and fitted correctly.



Spazio Lighting (Pty) LTD.

JOHANNESBURG OFFICE: 52 Andries Street | Wynberg/Sandton

CAPE TOWN OFFICE: 36 Milner Street | Paarden Eiland

DURBAN OFFICE: 31 Solstice Road | Umhlanga Ridge

011 555 5555 (Central Switchboard) | info@spazio.co.za