

WALL PACK

design by Spazio



- Exterior wall light
- Aluminium body
- Polycarbonate optic lens diffuser (Fig. 1)
- Asymmetric Light output (Fig. 2)
- Stainless steel screws
- Multiple gland entry points (Fig 3a and b)
- Two versions available
 - 30W/ 4000K/ 4687Lm
 - 70W/ 4000K/ 10937Lm
- Includes integral driver
- CRI > 80
- Class I
- IP 66
- Inland Quality

Important:
this product must be used for downlighting only.

Fig. 1 Optical lens



Fig. 2 Batwing output

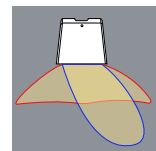


Fig. 3a Top entry

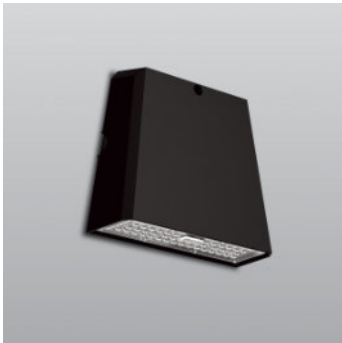


Fig. 3b Side entry



WALL PACK

design by Spazio



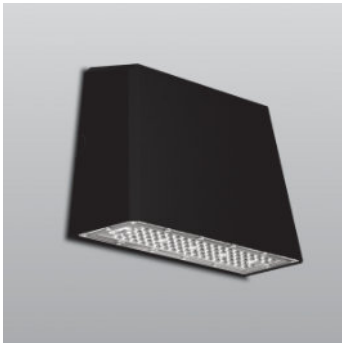
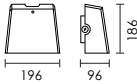
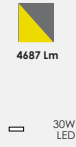
code

lamp details

30W Wall Pack

4516.3040.30 30W/ LED 4000K

Includes integral driver



code

lamp details

70W Wall Pack

4516.7040.30 70W/ LED 4000K

Includes integral driver

