

# INSTRUCTIONS

## MODENA ROUND BULKHEAD 3CCT

4503.0130

Please read the instructions before commencing installation and retain for future reference.

### SPECIFICATIONS

- **Fitting:** Body made in ABS & Polycarbonate with polycarbonate diffuser.
- **Lamp types:** 21W/ 230V LED
- **Protection against electric shock:** CLASS II. Does not require earth connection.
- **Ingress Protection:** IP65. Complete protection against dust and against the effects of water jets.
- **Driver:** Includes LED Driver
- **Quality/Corrosive rating:** Suitable for commercial and indoor/outdoor applications.
- **Ambient temperature range:** -20°C to +55°C.

### INSTALLATION INSTRUCTIONS:



Electrical products can cause death, injury, and damage to property. Installation of this product must be carried out by a qualified electrician, in accordance with SANS 10142. On completion of installation, ensure that the Certificate of Compliance is updated.



**CAUTION:** Risk of electric shock

**PLEASE NOTE:** The light source contained on this luminaire shall only be replaced by the manufacturer or the service agent or a similar qualified person.

#### Ensure main supply is switched off.

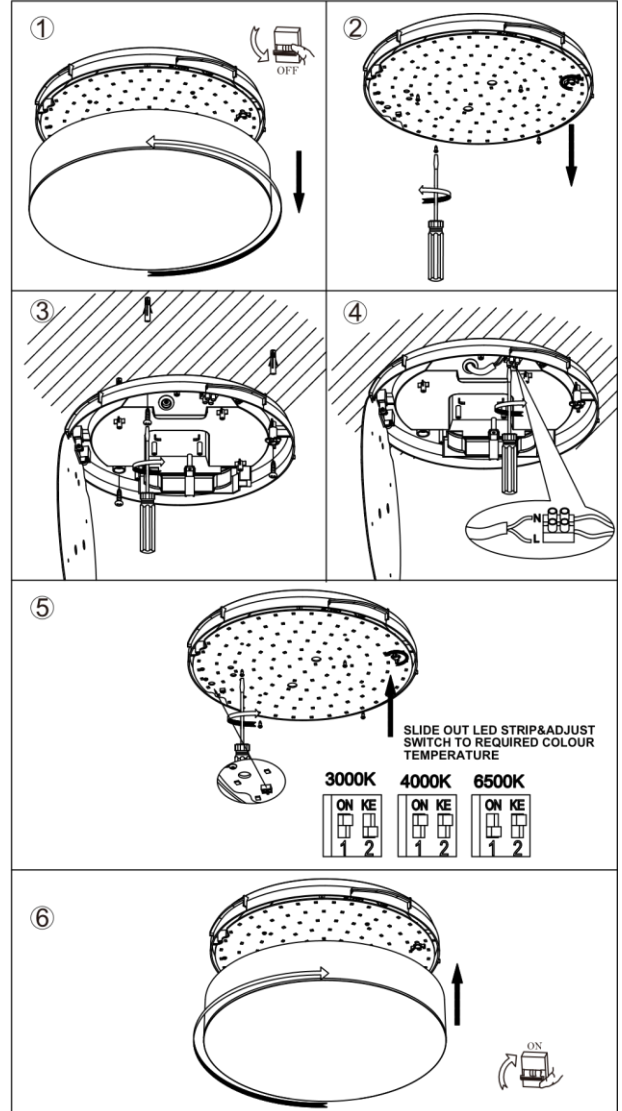
- Remove the diffuser from the housing. (Fig. 1)
- Unscrew and remove the LED module. (Fig. 2)
- Feed the main supply cable through the grommet in the base and fix the base to the surface with the screws provided. (Fig. 3)
- Connect the main cable to the terminal block. (Fig. 4).  
Brown (Live) - to Brown or Red  
Blue (Neutral) - to Blue or Black
- Turn the switch and choose the required colour temperature according to the diagram. (Fig. 5)
- Rotate and re-attach the diffuser to the housing. (Fig. 6)

#### Turn on mains supply.

**WARNING:** Ensure all items and screws are secure and fitted correctly.



### MODENA ROUND BULKHEAD 3CCT



Spazio Lighting (Pty) LTD.

JOHANNESBURG OFFICE: 52 Andries Street | Wynberg/Sandton

CAPE TOWN OFFICE: 36 Milner Street | Paarden Eiland

DURBAN OFFICE: 31 Solstice Road | Umhlanga Ridge

011 555 5555 (Central Switchboard) | [info@spazio.co.za](mailto:info@spazio.co.za)