

INSTRUCTIONS

ARIA ROUND CEILING

47W: 8953.1.3030

8953.1.4030

60W: 8953.2.3030

8953.2.4030

Please read the instructions before commencing installation and retain for future reference.

SPECIFICATIONS:

- **Fitting:** Ceiling fitting with metal body and acrylic diffuser
- **Lamp types:**
47W/230V LED Natural White 4000K / Warm White 3000K
60W/230V LED Natural White 4000K / Warm White 3000K
- **Protection against electric shock:** CLASS I. Require earth connection.
- **Ingress Protection:** IP20. Protection against the entry of solid bodies with dimensions more than 12mm.
- **Driver:** Includes integral LED driver.
- **Application:** Suitable for indoor commercial & domestic use only, except in corrosive environments.
- **Ambient temperature range:** -20°C to +50°C.

INSTALLATION INSTRUCTIONS:



Electrical products can cause death, injury, damage to property. Installation of this product must be carried out by a qualified electrician, in accordance with SANS 10142.

On completion of installation, ensure that the Certificate of Compliance is updated.



CAUTION: Risk of electric shock

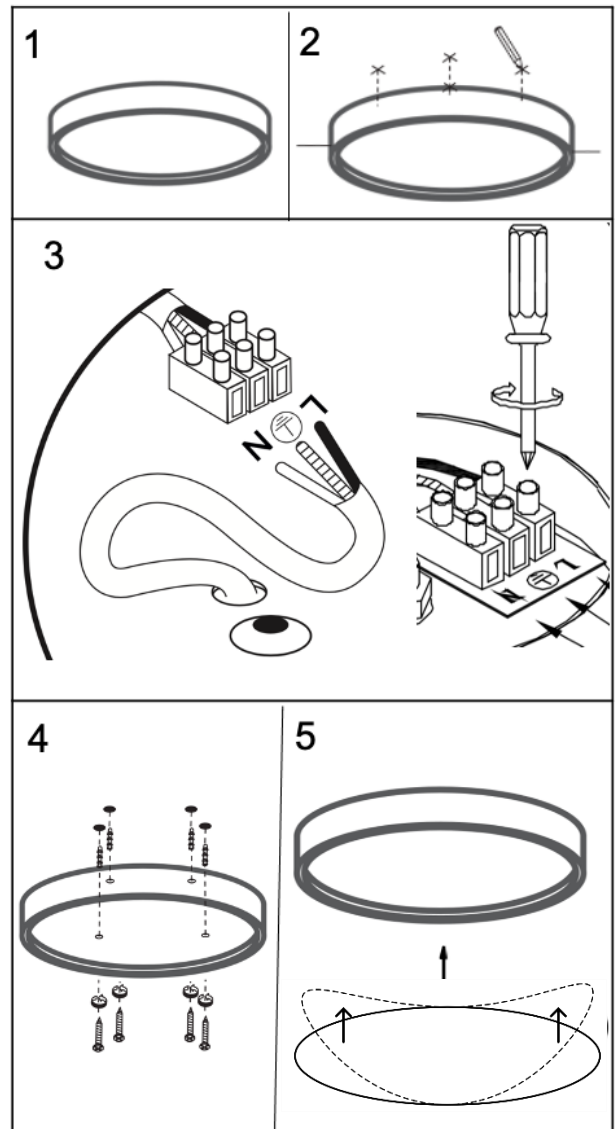
PLEASE NOTE: The light source contained on this luminaire shall only be replaced by the manufacturer or the service agent or a similar qualified person.

Ensure mains supply is switched off.

- The body of the fitting serves as the mounting bracket. (Fig. 1)
- Mark and drill holes according to the mounting holes of the fitting. (Fig. 2)
- Connect the fitting to the mains supply using the terminal block provided. (Fig 3)
Brown (Live) - to Brown or Red
Blue (Neutral) - to Blue or Black
Yellow and Green (Earth) – to Yellow and Green / Copper
- Insert the expansion tubes into the ceiling holes and attach the fitting to the ceiling using the screws provided. (Fig. 4)
- Fit the diffuser into the fitting by bending it inward and inserting into the fitting body. (Fig. 5).

Switch on the power supply and test the fitting.

WARNING: Ensure all items and screws are secure and fitted correctly.



Spazio Lighting (Pty) LTD.

JOHANNESBURG OFFICE: 52 Andries Street | Wynberg/Sandton

CAPE TOWN OFFICE: 36 Milner Street | Paarden Eiland

DURBAN OFFICE: 31 Solstice Road | Umhlanga Ridge

011 555 5555 (Central Switchboard) | info@spazio.co.za