

# INSTRUCTIONS

## HILTON CHARGE UP READING LIGHT

8295.3030 8295.3031

Please read the instructions before commencing installation and retain for future reference.

### SPECIFICATIONS:

- **Fitting:** Metal body and acrylic diffuser.
- **Lamp types:** 1W / 3000K
- **Power Source:** 5V 1A/2A
- **Charging Duration:** APPROX 3hrs.
- **Operating time:** 6hrs (once charged).
- **Battery Type:** 3.7V 1800mAh rechargeable lithium battery.
- **Class of Insulation:** Class II. Does not require earth connection.
- **Ingress Protection:** IP20. Protection against the entry of solid bodies greater than 12mm.
- **Quality/Corrosive rating:** Suitable for indoor, domestic and commercial use.

### INSTALLATION INSTRUCTIONS:

#### Installation the metal base:

- Determine the installation position.
- Remove the protective paper off the 3M adhesive sheet provided by the supplier, and paste it on the confirmed position, then attach the metal sheet to it, (Fig.1) or directly fix the metal sheet to the wall with the screws provided. (Fig.2)
- Attach the fitting to the fixed metal sheet or any other metal surface and adjust the fitting to the correct position. (Fig.3)

#### Dimming:

Three-step dimming. One step dimming can be achieved by switching on the light once. (Fig. 4)

#### Charging:

The product comes complete with a USB cable, allowing for it to be charged using a PC, mobile power pack or power adapter (power adapter not included). The indicator light will show red when charging and turns off once fully charged. (Fig. 4)

#### Please note:

Overcharging can damage the battery.

#### IMPORTANT:

- When the light becomes dim, please charge the fitting to protect the battery.
- Charge the fitting at least once a month to prolong battery life.



### HILTON CHARGE UP READING LIGHT

Fig. 1.

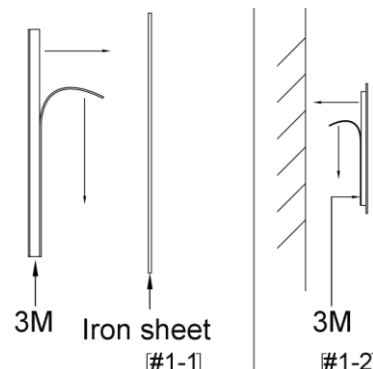


Fig. 2.

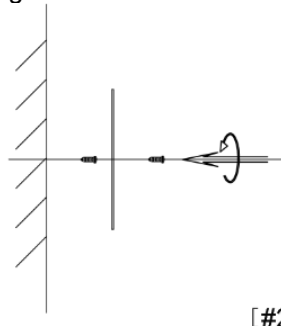


Fig.3.

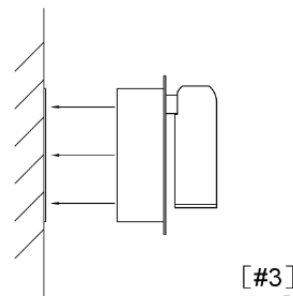


Fig. 4

