

INSTRUCTIONS

SLENDER DIMMABLE RECHARGEABLE TABLE LAMP

4670.3030

4670.3031

Please read the instructions before commencing use and retain for future reference.

SPECIFICATIONS:

- **Fitting:** Body made in die-cast aluminium with opal polycarbonate diffuser.
- **Lamp types:** 2.2W / LED 3000K
- **Protection against electric shock:** CLASS III
- **Ingress Protection:** IP54. Protection against the entry of dust and water splashes
- **Driver:** Not applicable
- **Quality/Corrosive rating:** Suitable for indoor / outdoor domestic and commercial use.
- **Ambient temperature range:** -10°C to +50°C.
- **Battery type:** Lithium (18650/2200mAh*2)
- **Charge time:** 5-7hrs
- **Working time:** 12hrs

INSTALLATION INSTRUCTIONS:

⚠ Electrical products can cause death, injury, damage to property. Installation of this product must be carried out by a qualified electrician, in accordance with SANS 10142. On completion of installation, ensure that the Certificate of Compliance is updated.

- Attach the micro-USB provided to a compatible power adapter. (Fig. 1)
- The micro-USB port is under the head of the lamp. (Fig.2)
- Once fully charged, screw the pole onto the base and clip the magnetized head on the top of the pole. (Fig.3)
- The on/off touch switch is situated at the top of the lamp shade. (Fig. 4)

WARNING:

Ensure all items and screws are secure and fitted correctly.

Suspension accessory sold separately (see page 2).



SLENDER DIMMABLE RECHARGEABLE TABLE LAMP

Fig.1

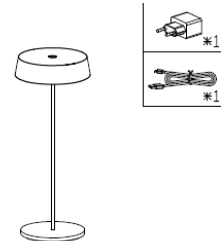


Fig.2

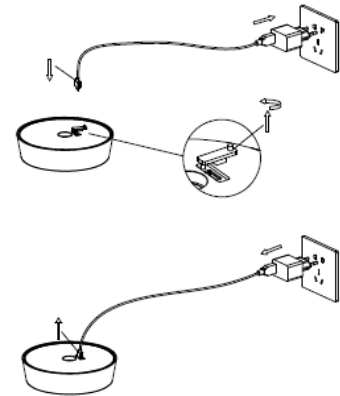


Fig.3

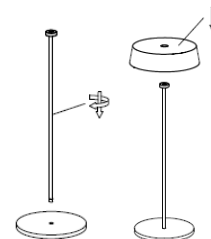
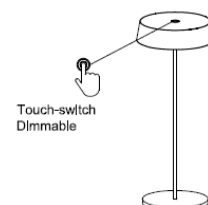


Fig.4



Spazio Lighting (Pty) LTD.

JOHANNESBURG OFFICE: 52 Andries Street | Wynberg/Sandton

CAPE TOWN OFFICE: 36 Milner Street | Paarden Eiland

DURBAN OFFICE: 31 Solstice Road | Umhlanga Ridge

011 555 5555 (Central Switchboard) | info@spazio.co.za

INSTRUCTIONS



SLENDER SUSPENSION ACCESSORY

4670.SUSP.30

4670.SUSP.31

- Repeat charging procedure (Fig. 1 & 2 on previous page)
- Attach the lamp to the magnetized point on the suspension (Fig.5)
- Hang the fitting where you want to use it (Fig. 6)

SLENDER SUSPENSION ACCESSORY

Fig.5

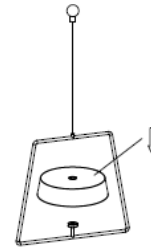
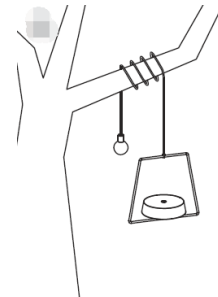


Fig.6



Spazio Lighting (Pty) LTD.

JOHANNESBURG OFFICE: 52 Andries Street | Wynberg/Sandton

CAPE TOWN OFFICE: 36 Milner Street | Paarden Eiland

DURBAN OFFICE: 31 Solstice Road | Umhlanga Ridge

011 555 5555 (Central Switchboard) | info@spazio.co.za